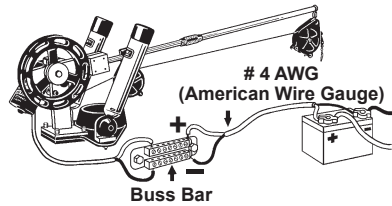


WARRANTY NOTICE!

Incorrect wiring of your Brute ES will destroy the circuit board of your downrigger and void your warranty. Always wire Positive (White) to Positive and Negative (Black) to Negative as shown below...

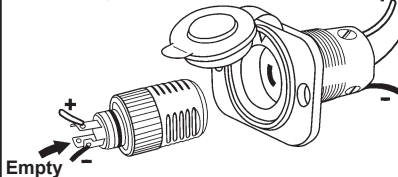


To assure the validity of your warranty: You **MUST** use a Bus Bar between your battery and your downrigger or use the ConnectPro® Plug and Receptacle Set (Provided with this package).

When wiring the Plug and Receptacle, leave one prong unwired (This prong will serve as a Locator Prong and assure that your downrigger's electrical circuit is always wired for the correct polarity).

Next, match and attach the Positive (White) wires to the corresponding prongs of the Plug and Receptacle. Then match and attach the Negative (Black) wires to the corresponding prongs of the Plug and Receptacle.

TIP: Take time to make sure that all Plugs, Receptacles and Downriggers are wired identically, so all downriggers are interchangeable on your boat.

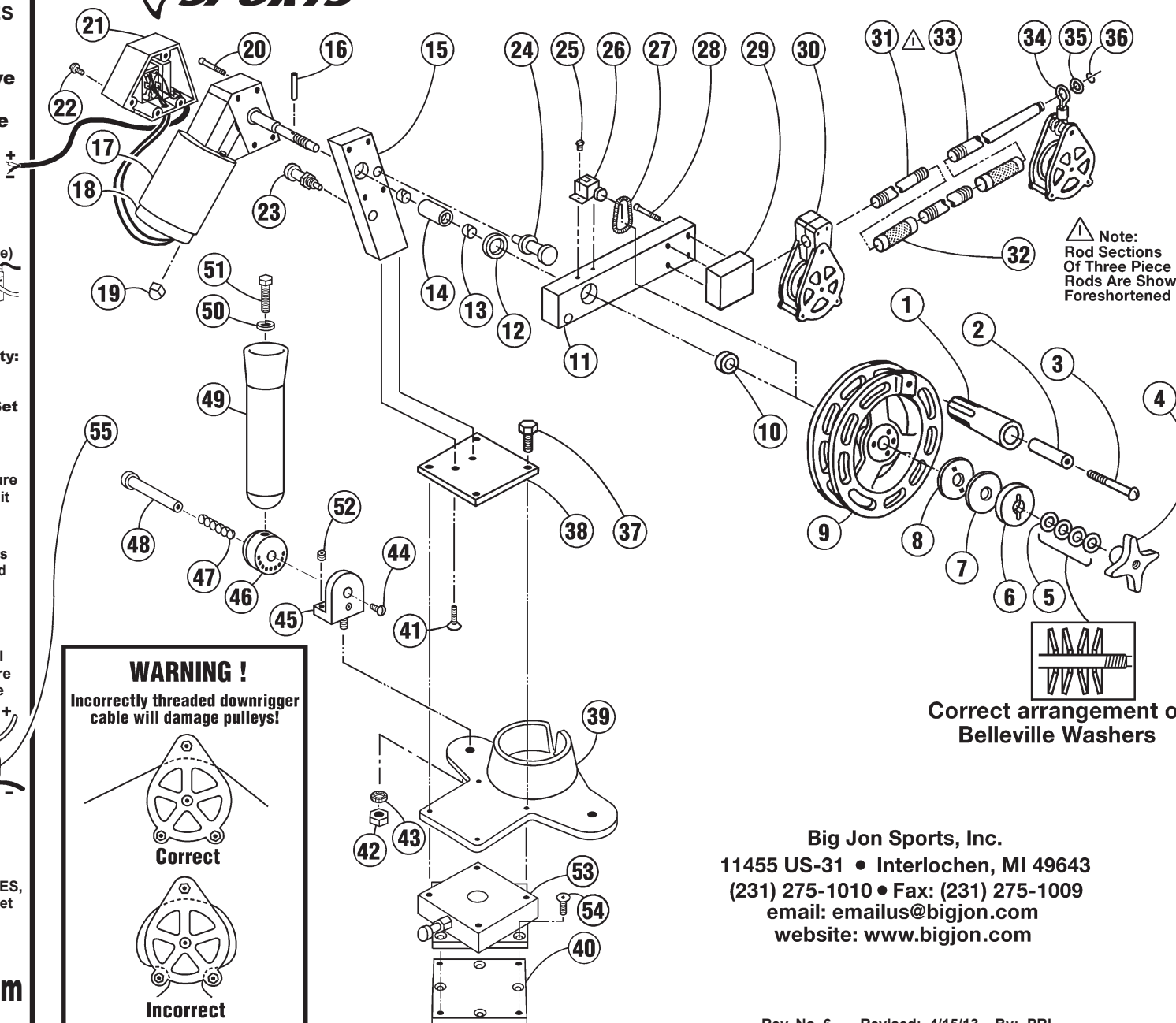


If you have an earlier model of the Brute ES, you can order the Plug and Receptacle Set (Stock # KT12VCP) by going to the Replacement Parts page of our on-line store at:

www.bigjonsports.com

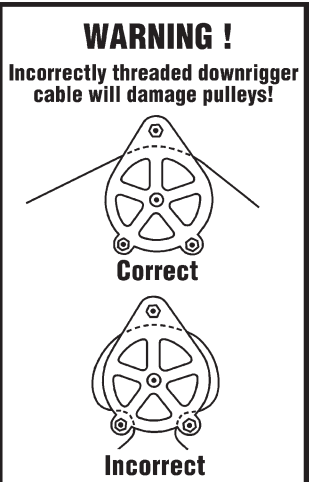
BIG JON SPORTS Brute ES

Parts List ES01000



△ Note: Rod Sections Of Three Piece Rods Are Shown Foreshortened

Correct arrangement of Belleville Washers



Big Jon Sports, Inc.
11455 US-31 • Interlochen, MI 49643
(231) 275-1010 • Fax: (231) 275-1009
email: emailus@bigjon.com
website: www.bigjon.com

Detail No.	Description	Qty.	Order By Part No.
1	Handle	1	51161
2	Handle Sleeve	1	50185
3	Handle Bolt	1	2005
4	Clutch Knob	1	51152
5	Belleville Washers	4	2231
6	Outer Clutch Disk (Slotted)	1	51093
7	Graphite Pad	1	2307
8	Inner Clutch Disk	1	51098
9	Reel	1	51164
10	Hardened Spacer	1	2238
11	Arm	1	51027
12	Nylon Spacer	1	51028
13	Nyliner Bushing	1	2230
14	Pivot Sleeve	1	51083
15	Upright	1	51013
16	3/16 x 3/4 in. Dowel	1	2165
17	Motor/Gearbox Assembly	1	2202C
18	Motor End Cap	1	51166
19	10-32 Black Nylon Acorn Nuts	2	2136
20	1/4-20 x 2 in. SSSHC Screw	4	2011
21	Switchbox Assembly	1	51165ASM
22	8-32 x 3/8 in. Philips Screws	4	2008
23	Latch Pin Assembly	1	51222
24	Stop Pin	1	51252
25	Counter Screws	2	2014
26	Counter	1	FC600ES
27	Counter Spring	1	2283
28	10-32 x 1-1/4 in. SSSCH Screws	4	2006
29	Rod Block	1	51018
30	Line Guide	1	BJ3049SRG
31	12 in. Rods	2	51048
32	Rod Collars	2	51044
33	18 in. End Rod	1	51125
34	5 Spoke Tip Assembly	1	BJ3049
35	Aluminum Tip Retainer	1	51043
36	Tip Retainer Ring	1	2181
37	1/4-20 x 1-1/8 in. SS Bolts	4	2016
38	Right Hand Base Plate	1	51003
39	Ball Cradle	1	52435
40	8 Hole Mounting Plate	1	51001
41	5/16-18 x 1 in. Upright Screws	2	2003
42	3/8 in. Jam Nuts	2	2113
43	3/8 in. Lock Washers	2	2237
44	1/4-20 x 3/8 in. Phillips Truss Head	2	2158
45	Multi-Set L-Brackets	2	55556
46	Multi-Set Barrels	2	55551
47	Multi-Set Springs	2	2600
48	1/2 in. x 2-1/4 in. Pivot Pins	2	55555
49	Multi-Set Tube Assembly	2	51221
50	1/2 in. Lock Washers	2	2241
51	1/2-20 HHCS Bolt	2	2351
52	1/4-20 Set Screws	2	2261
53	Swivel Base	1	SMT1
54	1/4-20 x 5/8 in. Flat Head Screws	4	2013
55	ConnctPro® Plug and Receptacle Set	1	KT12VCP