

3100-iSIC Quick Start Guide

This guide will help you get started. Detailed instructions are available in the NexSens 3100-iSIC manual.

Overview

The NexSens 3100-iSIC (Intelligent Sensor Interface and Control) is a cellular data logger designed specifically for environmental monitoring applications. The 3100-iSIC features a cellular modem for wireless communication and data retrieval. Options for cellular service providers include AT&T, Verizon, Sprint, and Alltel.



What's Included

- Cellular Data Logger
- 12V DC Battery
- A77 Programming Cable
- iSIC Kit includes
 - (2) Gland Fittings
 - (5) Desiccant packs
 - RS232 Interface Cable
 - iSIC Resistor Pack

Field Installation

1. Mount the data logger to a wall, pole, or other secure location above flood stage using the A55 Mounting Plate
2. Connect the A38 grounding kit wire to the copper lug on the bottom of the 3100-iSIC data logger and the other end to an appropriate earth ground.
3. Mount the A49 cellular antenna in a location which will maximize signal strength. Attach the RF cable (Part #A31-A36) from the antenna to the RF port on the 3100-iSIC.
4. Power the iSIC by connecting the 12V DC battery. Observe the green blinking LED in the hole at the end of the analog terminal strip. This confirms that the data logger is powered and ready.



5. Upon request the 3100-iSIC modem can be factory activated for cellular service. Otherwise, use the instructions in the 3100-iSIC manual to activate the cellular modem.

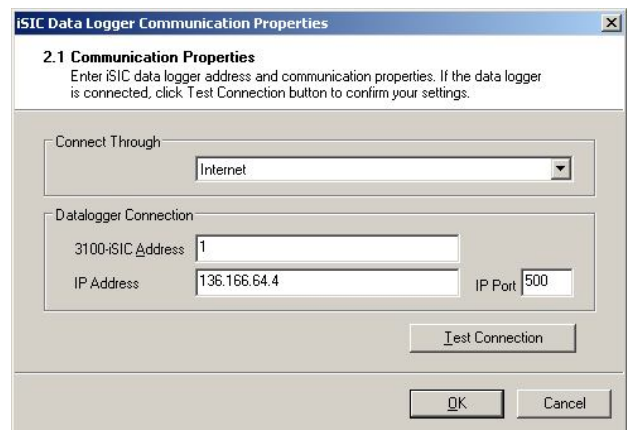
Note: If a cellular account is not set up, the RS232 iSIC interface cable can be used for direct connection.

6. After activation, connect the cellular DB-9 cable within the iSIC to the iSIC DB-9 port in the center of the data logger panel.
7. Connect sensors to the data logger. Bring any cables into the enclosure by removing a port plug and installing a gland fitting from the iSIC Kit.

Configuring with iChart

1. Install iChart software on a Windows computer.
2. Ensure power is supplied to the data logger.
3. Add the 3100-iSIC to an iChart project file.

To accomplish this: Follow the Setup Device Wizard to add a site name, and then select **3100-iSIC** from the list of NexSens data loggers. Enter the correct IP address at the prompt and click **Test Connection** to check communication.



4. Add sensors in iChart by selecting the manufacturer and model number.
5. Continue the Setup Device Wizard and click **Program iSIC** to conclude configuration.

For more information see the online manual
www.nexsens.com/pdf/nexsens_3100-isic_manual.pdf



1415 Research Park Drive
Beavercreek, Ohio 45432
937-426-2703
www.NexSens.com