

3100-MAST Quick Start Guide

This guide will help you get started. Detailed instructions are available in the NexSens 3100-iSIC manual.

Overview

The NexSens 3100-MAST is designed specifically for remote environmental monitoring applications. It arrives fully pre-configured with a 3100-iSIC (Intelligent Sensor Interface and Control) cellular data logger and 20 watt solar panel. The setup incorporates a cellular modem for wireless communication and data retrieval. Options for cellular service providers include AT&T, Verizon, Sprint, and Alltel.



What's Included

- Cellular Data Logger
- A22 20-Watt Solar Power Kit
- A49 High Gain Cellular Antenna with Aluminum Angle Bracket
- A35 2' RF Cable, N-style Connectors
- A55 Pole/wall mounting kit
- MAST 2" NPT Aluminum Pole, 24" length
- 2" NPT PVC Pipe Cap
- 2" NPT Aluminum Female Pipe Coupling

Field Installation

1. Thread the entire system onto the end of a 2" NPT pipe using the female coupling.

Note: To maximize performance, the solar panel should be oriented to the southern hemisphere and angle adjusted to approximately 45 degrees.

2. Connect the A38 grounding kit wire to the copper lug on the bottom of the 3100-iSIC data logger and the other end to an appropriate earth ground.
3. Power the iSIC by connecting the 12 VDC battery and attaching the solar cable to the MS2 connector. Observe the green blinking LED in the hole at the end of the analog terminal strip. This confirms that the data logger is powered and ready.

4. Upon request, the 3100-iSIC modem can be factory activated for cellular service. Otherwise, use the instructions in the 3100-iSIC manual to activate the cellular modem.

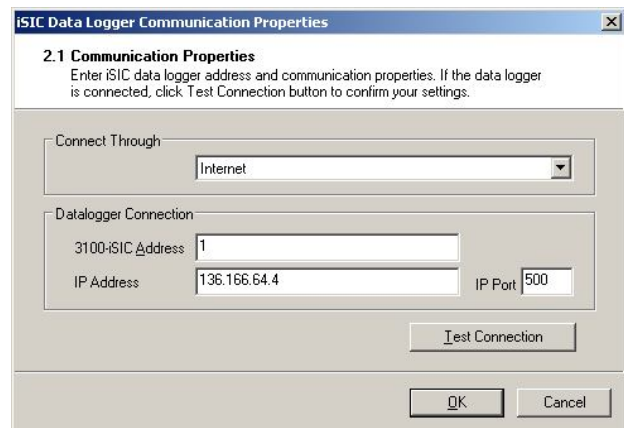
Note: The RS232 iSIC interface cable can be used for direct connection.

5. After activation, connect the cellular DB-9 cable within the iSIC to the iSIC DB-9 port in the center of the data logger panel.
6. Connect sensors to the data logger. Bring any cables into the enclosure by removing a port plug and installing a gland fitting from the iSIC Kit.

Configuring with iChart

1. Install iChart software on a Windows computer.
2. Ensure power is supplied to the data logger.
3. Add the 3100-iSIC to an iChart project file.

To accomplish this: Follow the Setup Device Wizard to add a site name, and then select **3100-iSIC** from the list of NexSens data loggers. Enter the correct IP address at the prompt and click **Test Connection** to check communication.



4. Add sensors in iChart by selecting the manufacturer and model number.
5. Continue the Setup Device Wizard and click **Program iSIC** to conclude configuration.

For more information see the online manual(s) www.nexsens.com/pdf/nexsens_3100-isic_manual.pdf



1415 Research Park Drive
Beavercreek, Ohio 45432
937-426-2703
www.NexSens.com