

micro-T Quick Start Guide

This guide will help you get started. Detailed instructions and reference information are available on the micro-T CD.

Overview...

A micro-T logger is a self-contained, self-powered, and field rugged temperature logging system. micro-T software makes deployment set-up and data download quick and easy. The software automatically recognizes and tracks the unique ID of each logger, creates graphical displays, reports, enables one-button export to Excel or PDF, and much more!



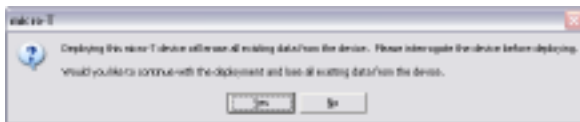
Getting Started...

Before connecting the sensor to the computer, first install the software. Insert the CD into the computer CD drive. The setup process starts automatically. If not, you can start it manually by double-clicking the setup icon found in My Computer on the CD drive. When installing, make sure that no micro-T USB adapters are connected to the computer. After the software is installed, follow the steps below.

- Step 1.** Connect the USB adapter to a USB port on the computer. The Windows Driver Installation will be displayed. Follow its instructions. For assistance see Section 2 of the manual. Click **Continue Anyway** if you see the following message:



- Step 2.** Open the micro-T software by clicking on the desktop icon. The Open Option dialog box will be displayed. Choose **Create New Project**. Follow the dialog boxes to create your first project.
- Step 3.** Touch the printed side of the micro-T logger to the USB adapter. Then click Deploy in the main project window. The following warning message will appear:



If this is your first time using this logger click **Yes**. Otherwise if there is data on the device you may want to keep, click **No** and upload the data by interrogating the logger.

Starting a Deployment...

Clicking Deploy will open the **micro-T Deploy** dialog box. This dialog box is used to set-up the sample for deployment.

Enter the desired log interval into the log interval field. You can then select if you would like to start the deployment right away or at a later time with the begin log at feature.

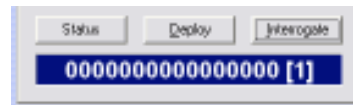


See the manual section 3 for more information on memory roll over.

Retrieve Data From Loggers...

In addition to the device interface display, data can be viewed in table, statistical, or graph format by selecting the appropriate tab near the top of the main display.

Data is retrieved by the process of "interrogating" each device in the micro-T logger database. To interrogate sensors, click the **Interrogate** button as shown below:



The micro-T software will search every USB and Serial port for a connected micro-T logger. If it successfully finds a micro-T logger, the software will automatically scan to see if that device is already in the database. All data contained on the sensor is uploaded into your database, as well. If the device is not already in the database, then device will automatically be added, along with all of its data. Only one micro-T device may be connected to a computer at a time.

Note: after uploading the data it is recommended to re-deploy the micro temperature logger.

Additional Features...

Comprehensive reports, graphical basemaps, export to Microsoft Excel and Adobe PDF, data import, and data replication in CSV. Micro-T software works with the full line of micro temperature iButton loggers, including the temperature and relative humidity logger.

For More Information ...

For more information see the micro-T manual which is available on your micro-T software CD.

micro-T software is also available for download here:

<http://www.nexsens.com/download/microtsetup.exe>



Address 1328 Parkway Court
Beavercreek, Ohio 45432
Phone 937-426-2703
Web www.nexsens.com