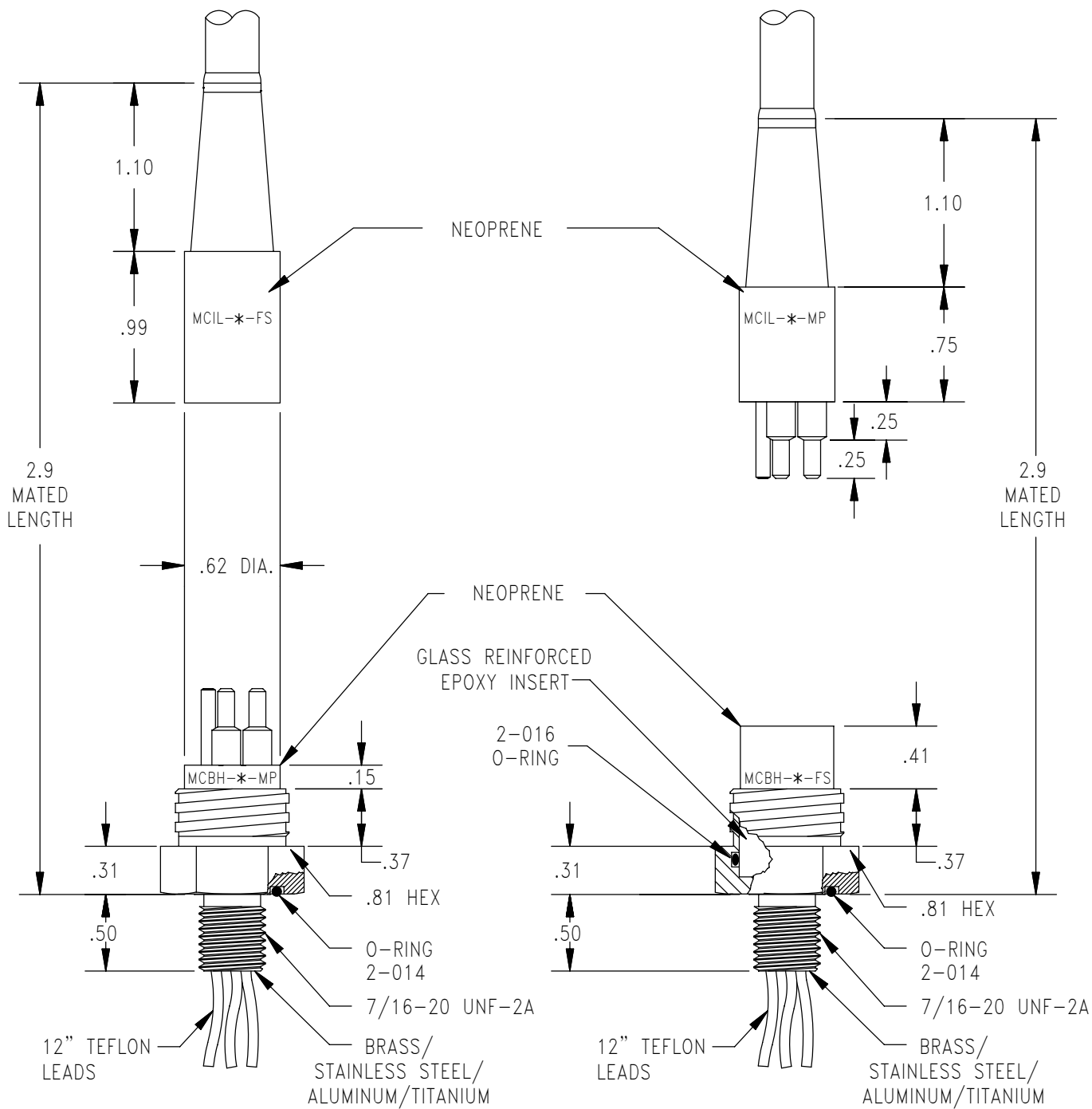


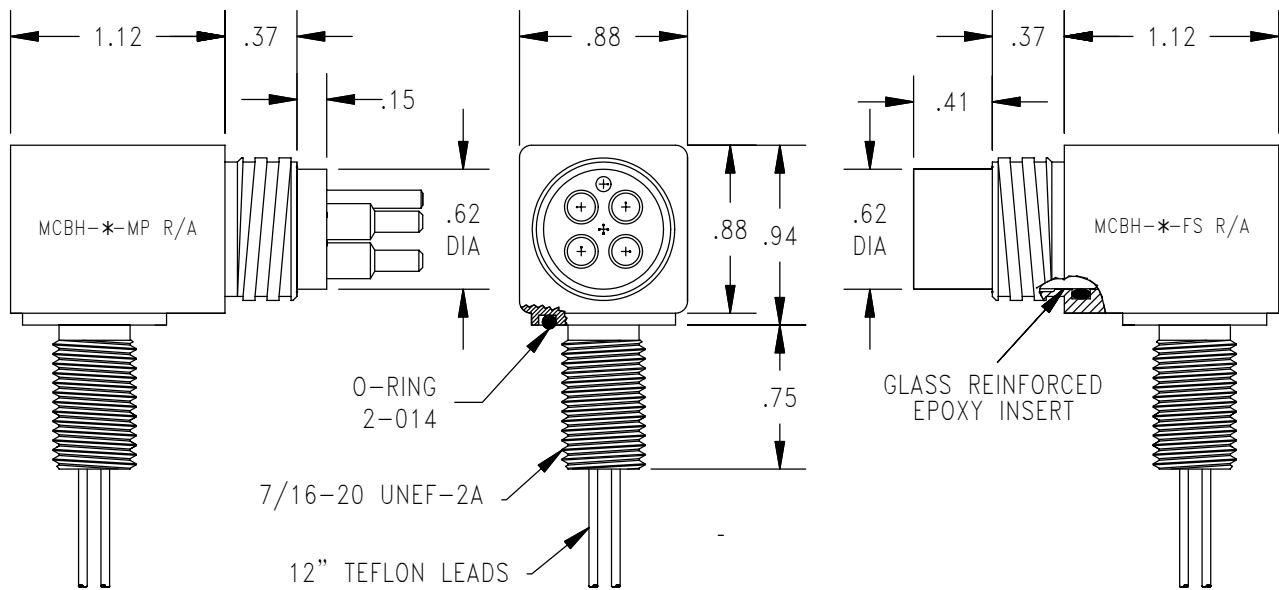
- DESCRIPTION AND MATERIAL
- Molded neoprene.
 - Two to eight contacts.
 - Up to 600 VDC.
 - Up to 10,000 PSI, mated.
 - Glass reinforced epoxy puck with o-ring seal provides waterblock in event of damage to neoprene face of bulkhead.
 - Bulkhead connector design open face pressure rated to 5000 PSI.
 - Contacts gold plated per MIL-G-45204.
- CABLE
- Inline connectors in this series are molded on a standard 24" length of cable, #20 AWG, unless otherwise specified.
 - Bulkhead connectors have 12" teflon leads, Type E per MIL 16878/4, two to four contact – #20 AWG, five to eight contact – #22 AWG.
- USES
- Light to medium duty applications.
 - Hazardous environments.
- GUIDELINES
- All mounting surfaces require a 32 finish.
 - Lubricate mating surface with 3M Silicone Spray or equivalent, DO NOT grease! Connectors must be lubricated on a regular basis.
 - Lubricate o-ring with Dow Corning #111 Valve Lubricant or equivalent.
 - Replace o-rings when re-using connectors.
 - Avoid nicks and cuts around contacts as these are the sealing surfaces.
 - Elastomers can be seriously degraded if exposed to direct sunlight or high ozone levels for extended periods of time.
 - Do not over tighten bulkhead nuts.
 - Do not pull on cable to disconnect.
 - Avoid sharp bends at cable entry to connector.
- ORDERING INFORMATION
- Bulkhead connectors do not come with nuts and washers. Nuts and washers should be ordered separately.

MCIL/BH (WB)-2/3/4

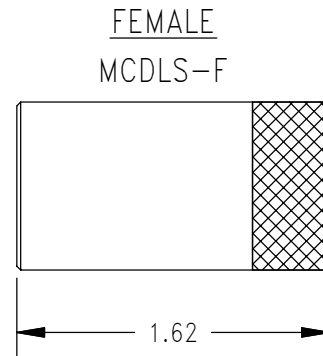
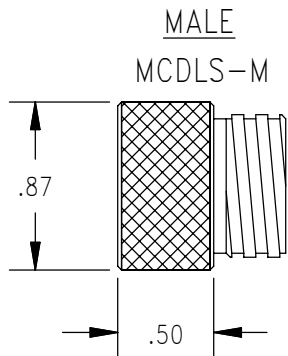
MICRO MINI WET
PLUGGABLE (WATERBLOCKED)



MCIL/BH (WB)-2/3/4-R/A MICRO MINI WET PLUGGABLE (WATERBLOCKED)

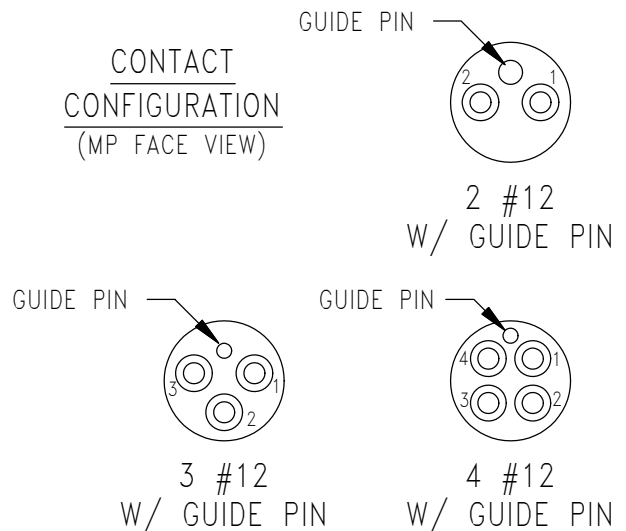


DELRIN LOCKING SLEEVES



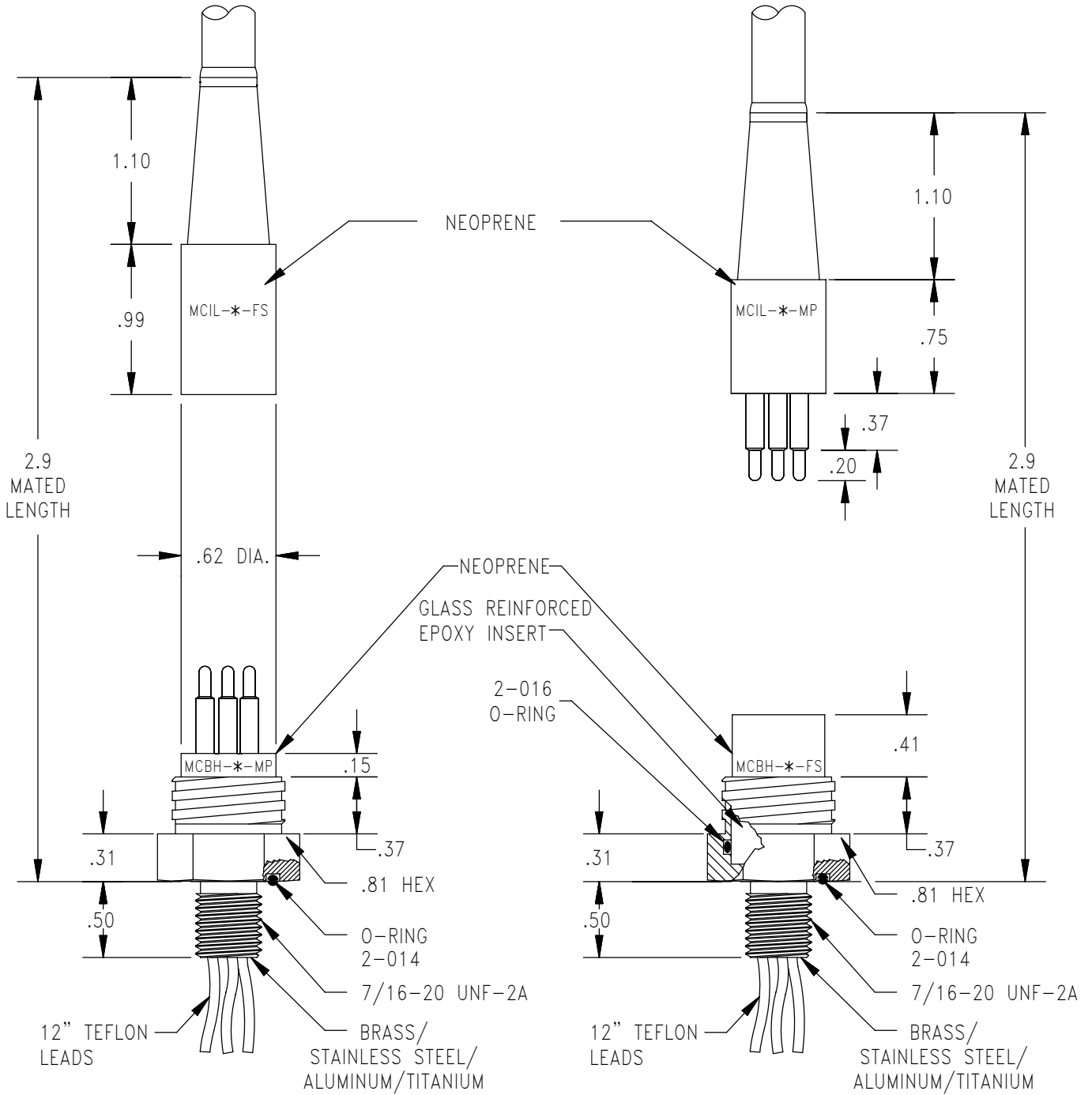
MOUNTING TORQUE FOR MCIL/BH (WB)-FS/MP	not to exceed 100 in/lbs
MATED PRESSURE RATING (psi)	10,000
DUMMY PLUG FOR MCIL/BH (WB)-FS	MCDC- *-MP
DUMMY PLUG FOR MCIL/BH (WB)-MP	MCDC- *-FS
* Specify number of contacts. * Dummy plugs found on page 65 125	

CONTACT CONFIGURATION (MP FACE VIEW)



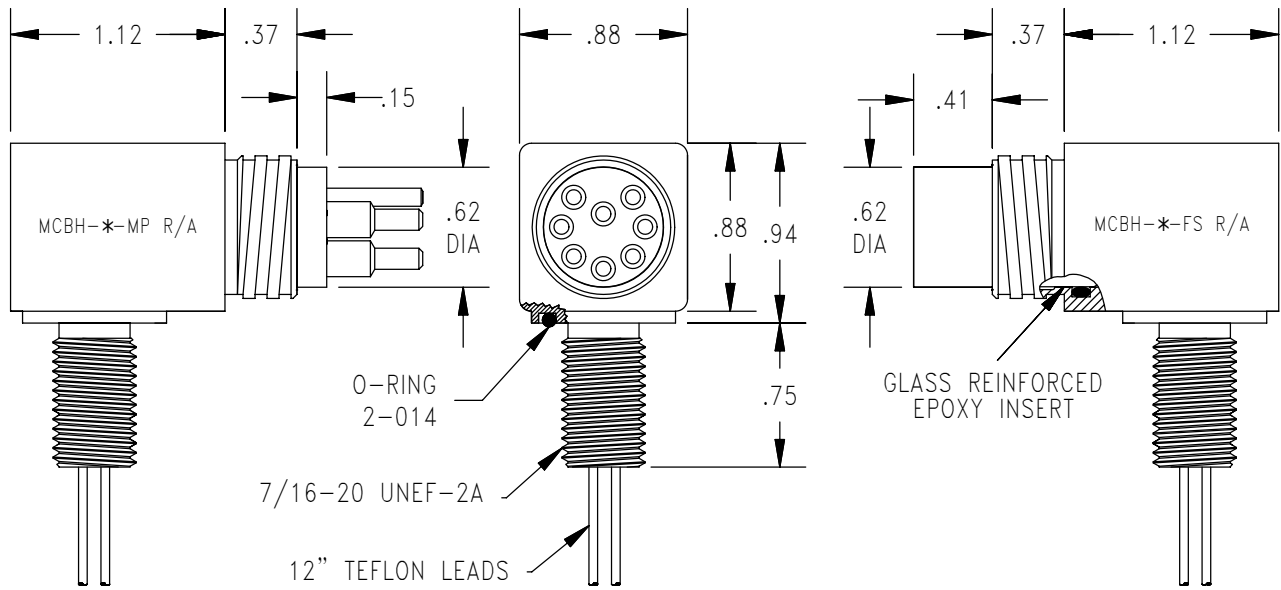
MCIL/BH (WB)-5/6/8

MICRO MINI WET
PLUGGABLE (WATERBLOCKED)



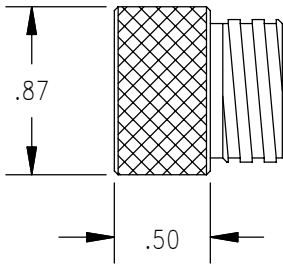
MCIL/BH (WB)-5/6/8-R/A

MICRO MINI WET
PLUGGABLE (WATERBLOCKED)

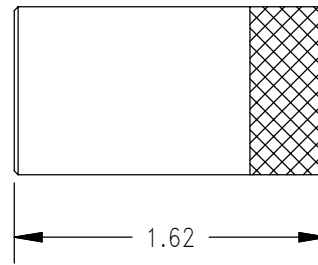


DELRIN LOCKING SLEEVES

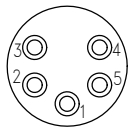
MALE
MCDLS-M



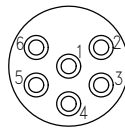
FEMALE
MCDLS-F



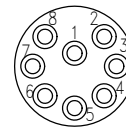
CONTACT CONFIGURATION (MP FACE VIEW)



5 #15



6 #15



8 #15

MOUNTING TORQUE FOR MCIL/BH (WB)-FS/MP	not to exceed 100 in lbs
MATED PRESSURE RATING (psi)	10,000
DUMMY PLUG FOR MCIL/BH (WB)-FS	MCDC- * -MP
DUMMY PLUG FOR MCIL/BH (WB)-MP	MCDC- * -FS
* Specify number of contacts. * Dummy plugs found on page 65 125	