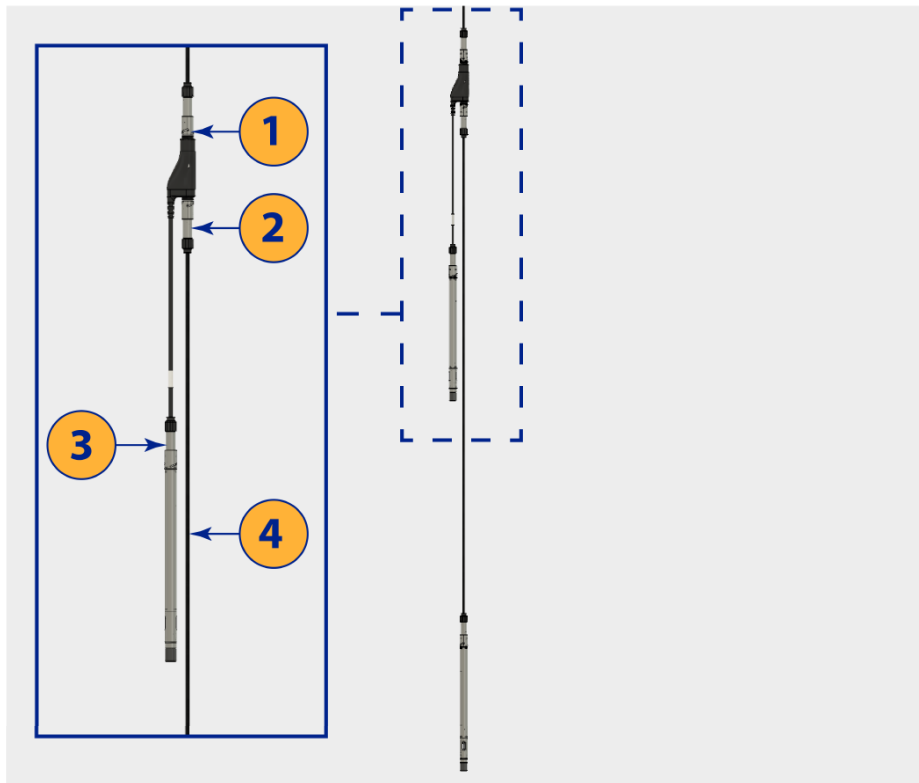


## Rugged Cable Splitter

0085840 (non-vented); 0095500 (vented)



- |   |   |
|---|---|
| 1 | Cable Splitter up hole connector - male connector       |
| 2 | Cable Splitter down hole connector - male connector     |
| 3 | Cable Splitter instrument connection - female connector |
| 4 | Cable to next splitter or final instrument              |

## Application

### Non-Vented

Use the *non-vented* Rugged Cable Splitter to deploy and communicate with multiple instruments on a single string of RuggedCables.

### Vented

You can deploy the *vented* Rugged Cable Splitter with a combination of vented and non-vented instruments. Attach vented **or** non-vented cables and instruments to the splitter's female connector. Use only non-vented instruments on the splitter's male down-hole connector.



You must attach a vented cable to the splitter's up-hole connector when using vented cables and instruments on the female connector.



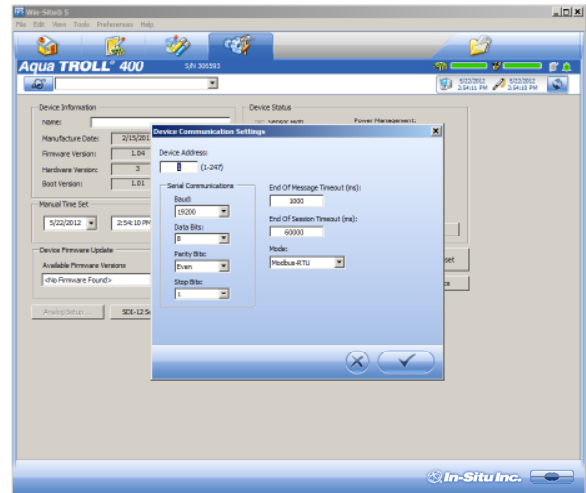
Always deploy an instrument on the female connector with the female connector oriented down.

## Changing the Device Address

Networking multiple Level TROLL, Aqua TROLL, Rugged TROLL, or RDO PRO Instruments requires each device to have a unique device address.

Complete the following steps with the instrument connected to the software.

1. Click the **Device Setup** tab.
2. Click the **Modbus Setup...** button.
3. Select the **Device Address** box and change the number to the desired value, making sure to not duplicate an address within the network.



4. Click the **check mark** to save changes. Click **Yes** when asked to proceed.
5. Click **No** when prompted to save the changes as the new default settings.



You must change Win-Situ Software communication settings to match the device address next time you connect the instrument.

## Specifications

<b>Materials</b>	Viton <sup>®</sup> , polyurethane, titanium, ULTEM <sup>™</sup>
<b>Environmental rating</b>	IP68
<b>Pressure rating</b>	300 PSI
<b>Break strength</b>	127 kg (280 lbs) maximum on down hole male connector 22.67 kg (50 lbs) maximum on down hole female connector (instrument connection)
<b>Dimensions</b>	500 mm (19.69 in.) total length 42.7 mm (1.68 in.) maximum width 18.5 mm (0.73) connector diameter
<b>Cable extension</b>	Black polyurethane, 400 mm (15.7 in.) long
<b>Conductors</b>	6 conductors, 24 AWG, polypropylene insulation
<b>Operating temperature</b>	-25° to 55° C (-13 to 131° F)