

Auxiliary Power Boxes and Junction Boxes

FOR AQUISTAR SMART SENSORS



Standard auxiliary power box shown

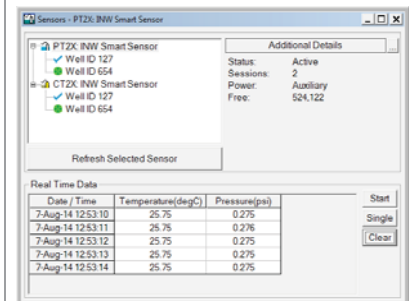
APPLICATIONS

- Groundwater pumping tests
- Remote location monitoring
- Locations with multiple sensors
- Data intensive monitoring
- Powering 12V devices such as the DO2 or Turbo

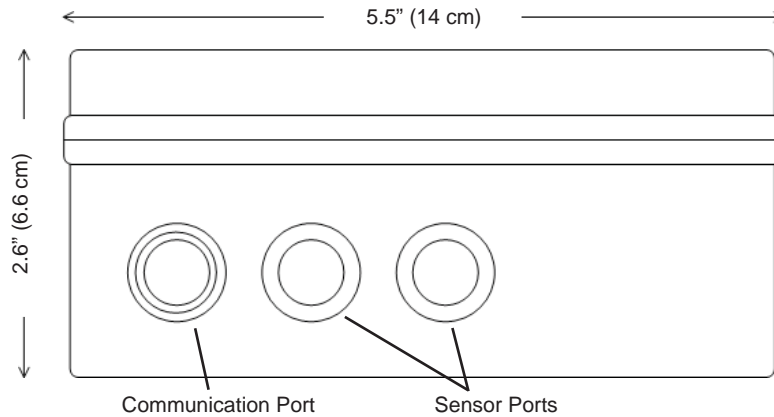
Expand your network with power and junction boxes!

Features

- Weatherproof polycarbonate (IP 66/67) enclosure
- Simplifies synchronization of data collection schedules between multiple sensors
- Facilitates session management and data upload with batch operations available in Aqua4Plus
- Allows multiple sensors to be plugged into one telemetry device, such as the VZCOM
- 12 VDC auxiliary power box version:
 - Includes 8 replaceable AA batteries - available in alkaline or lithium
 - Provides surface power for up to seven sensors
 - Adds redundancy to sensors with internal batteries to prevent data loss from dead batteries - extends probe life
 - Allows battery replacement with sensor left in situ



Connect and control multiple Smart Sensors



SPECIFICATIONS

Weatherproof Box

Enclosure Material	Polycarbonate IP 66/67 NEMA 1, 4X, 6, 6P, 12, 13
Dimensions (excluding connectors)	5.5" x 3.1" x 2.6" (14 x 7.9 x 6.6 cm)

Power

Auxiliary Power Box	12 VDC (8 AA Alkaline cells 2100 mAh) <i>(Optional Lithium cells)</i>
Junction Box	None

Connections

Auxiliary Power Box	1 - communication port 1 - sensor port <i>(optionally up to 7)</i>
Junction Box	1 - communication port 2 - sensor ports <i>(optionally up to 7)</i>

CONNECTOR WIRING

Auxiliary Power Box

Communication Port

Brown	1	N/C
White	2	Modbus D-
Blue	3	Modbus D+
Black	4	SDI-12 Signal
Gray	5	Signal Gnd

Sensor Port

Brown	1	12 VDC+
White	2	Modbus D-
Blue	3	Modbus D+
Black	4	SDI-12 Signal
Gray	5	Signal & 12 VDC Gnd

Junction Box

Communication Port

Brown	1	12 VDC+
White	2	Modbus D-
Blue	3	Modbus D+
Black	4	SDI-12 Signal
Gray	5	Signal & 12 VDC Gnd

Sensor Port

Brown	1	12 VDC+
White	2	Modbus D-
Blue	3	Modbus D+
Black	4	SDI-12 Signal
Gray	5	Signal & 12 VDC Gnd

©2014 Instrumentation Northwest, Inc. All rights reserved. INW and AquiStar are registered trademarks of Instrumentation Northwest. Modbus is a registered trademark of Schneider Electric. Information in this document is subject to change without notice. Doc# 6F0070r1 8/7/14

SALES & SERVICE

8902 122nd Avenue NE
Kirkland, WA 98033 USA
425-822-4434
FAX 425-822-8384 / info@inwusa.com

1-800-PRO-WELL
WWW.INWUSA.COM

