

AccuStage Quick Start Guide

This guide will help you get started. Detailed instructions are available in the NexSens AccuStage manual.

Overview

The NexSens AccuStage vented water level sensor is a self-contained pressure transducer. The device is designed for long term water monitoring applications in streams, rivers, reservoirs, irrigation channels and groundwater wells.

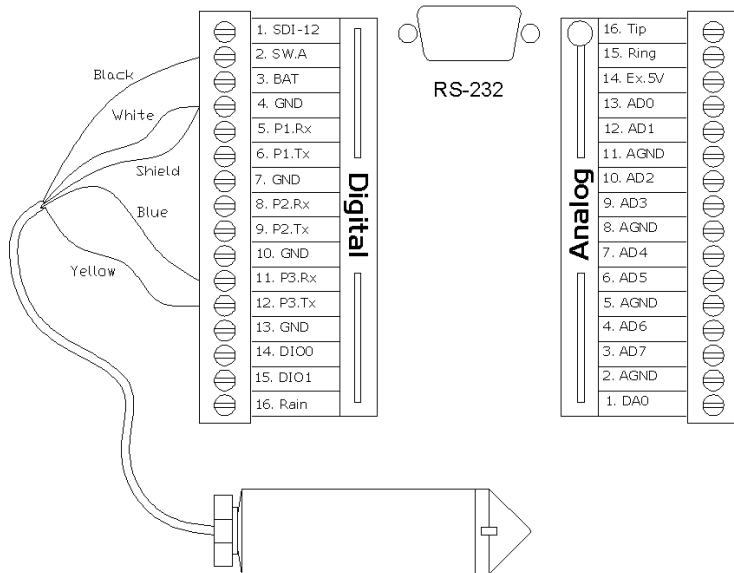


Installation

The installation requires only a small flathead screwdriver and a 15/16" wrench.

1. Remove a port plug from the iSIC enclosure and install a gland fitting from the iSIC kit. Run the AccuStage cable through the gland fitting.
2. Wire the sensor into the digital terminal strip as shown in the diagram. The red lead is not necessary and should be safely cut flush. Do not clamp on wire insulation.

Note: The most durable connection is made to GND if the white and shielded wires are crossed and clamped at the point of intersection.

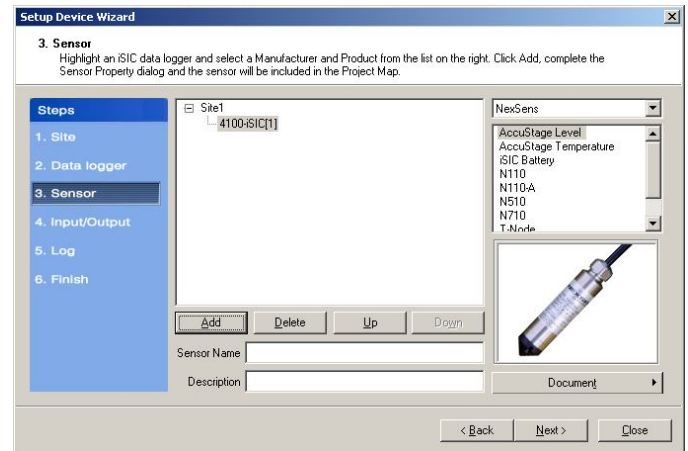


3. Tighten the gland fitting on the sensor cable until it cannot be pushed or pulled out of place. Then tighten an additional 1/4 turn.

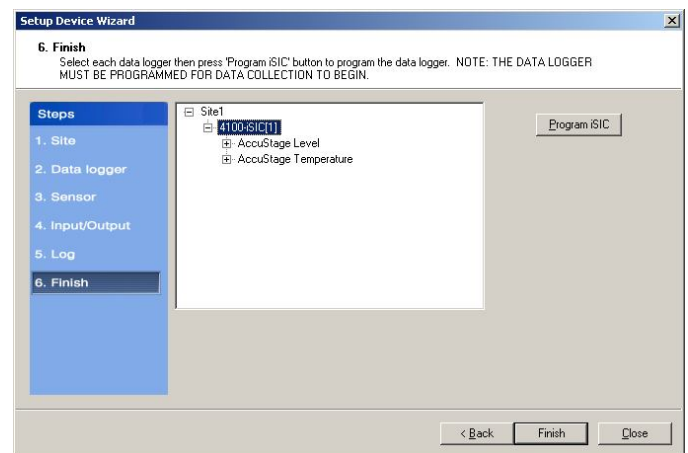
Configuring the AccuStage with iChart

Ensure all wiring is correct and secure.

1. Open the Setup Device Wizard and proceed to Step 3. Sensor.
2. Select **NexSens** from the manufacturer drop down list and the AccuStage Level from the sensor list. Click **Add**.



3. Click **OK** at the *Sensor Properties* dialog. The sensor should now be shown in the Navigation Panel.
4. Repeat steps 2 and 3 for the AccuStage Temperature sensor.
5. Continue the Setup Device Wizard and click **Program iSIC** to conclude configuration.



For more information see the online manual
http://nexsens.com/pdf/manuals/nexsens_accustage_manual.pdf



1415 Research Park Drive
Beavercreek, Ohio 45432
937-426-2703
www.NexSens.com