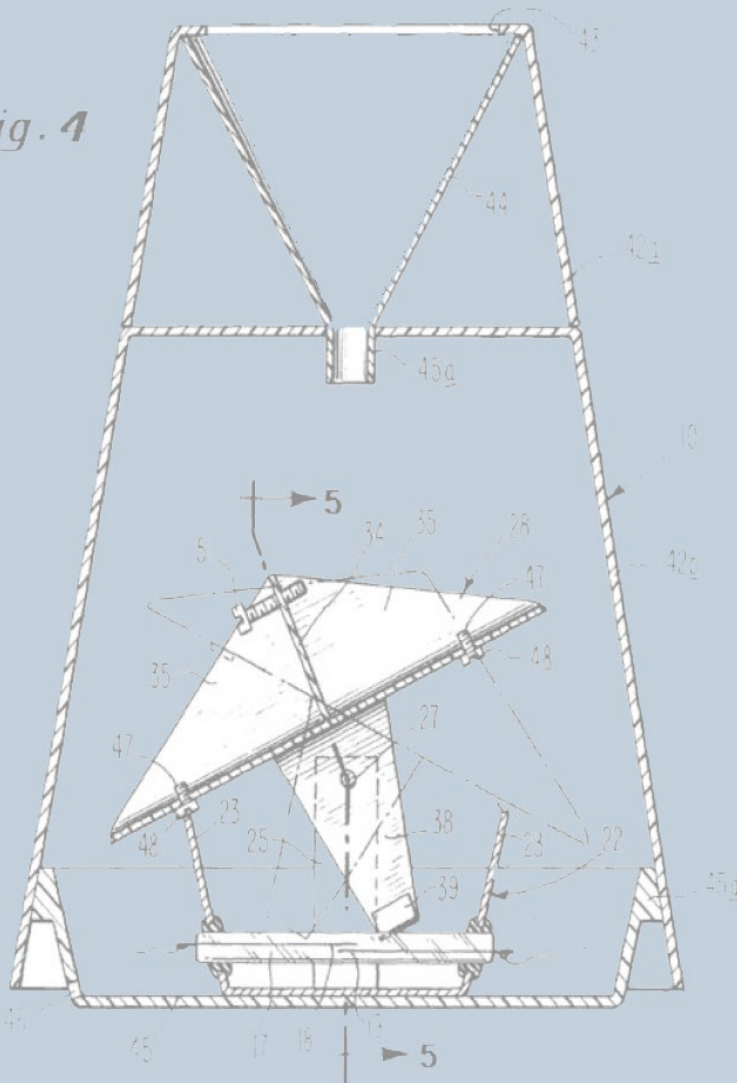


Rain Measurement and Recording

U.S. Patent March 16, 1976 Sheet 2 of 2 3,943,7

Fig. 4



The **Tipping Bucket Rain Gauge** has been a corner stone of the RainWise product family since we took out the patent for it in 1976. The self-emptying tipping bucket design is now an industry standard as this simple, accurate and durable rain gauge can be mounted anywhere that rainfall needs to be recorded.

The RainWise Tipping Bucket Rain Gauge has an extra large 8" diameter collector that meets the Nation Weather Service specifications for statistical accuracy, and every tip of the bucket is hand calibrated to count one hundredth of an inch of rainfall.

Our rain gauge is available in wired and wireless models that send data to an indoor display, or in standard and industrial data logger models that provide an economical solution to the annual collection and recording of rainfall data even in remote locations.



Rainew™ Rainfall Gauge

RainWise, the world leader in tipping bucket rain gauges, presents our standard rain collector, the Rainew™.

Mount the gauge out-of-doors and record the rainfall inside on a single or dual LCD counter.

Features

- The 8" collector meets NWS specifications for statistical accuracy self-emptying.
- Each tip of the bucket shows 1/100th of an inch on the indoor LCD display.
- Hand calibrated
- A built in bubble level allows for accurate installation
- The display will indicate up to 9.99" of rain.
- A simple button allows you to reset counter to zero after each rainfall.
- A long-life lithium battery is included.
- 2 year warranty on data logging and transmission
- Lifetime warranty on collector

Housing:	High Impact Polypropylene, UV Inhibited
Transducer:	Tipping Bucket of specially formulated plastic for low surface tension
Switch:	Dry reed switch
Output:	Less than 0.1 sec. switch closure
Capacity:	6 to 24 VDC @ 500ma
Resolutions Available:	0.01 inches
Accuracy:	2% at 1.5" per hour

Wired or Wireless Models Available

- Wired model comes with 60' of wire .
- Wireless model has a 300' unobstructed range

Choose a Single or Dual Counter

A single display tracks up to 9.99" of rainfall and can be reset with the push of a button. A dual counter allows you to track both individual events and an annual running total.

- Counters can be wall mounted
- Counters are available in Metric



RainLog™ Data Logger

Our new generation RainLog™ data logger provides an economical method of logging rainfall at a remote location where power is not available.

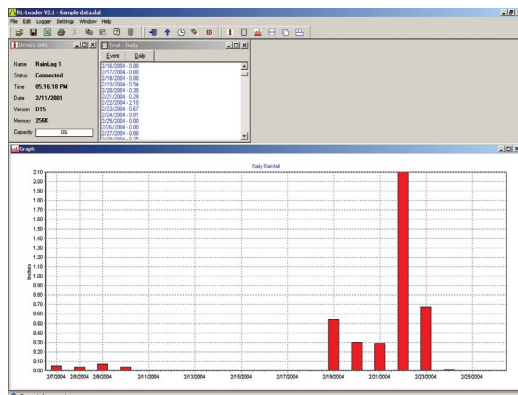
This battery operated logger fits inside many models of tipping bucket rain gauges and will log total rainfall at a one-minute resolution. This logger has exceptional memory and can record and store data for 5 years or more. It can easily be unplugged and connected to the USB port of a computer. The RainWise RainLog™ comes with our free Windows based 'RL-Loader 2' software. RL-Loader 2 is used to download and configure data from the RainLog™. Data is displayed in both text and graphical formats that can be printed directly to generate reports and perform analysis. Data can be exported directly to Microsoft Excel.

Features

- Two year warranty
- One year capacity for the battery supply
- Extra large 2 MB nonvolatile memory capacity
- One minute time/date stamp resolution
- Will fit any RainWise gauge or other manufacturer tipping bucket style rain gauge.
- May be used as an event recorder
- LED flashes when properly connected
- Easy USB connectivity
- Powered by two AAA alkaline batteries



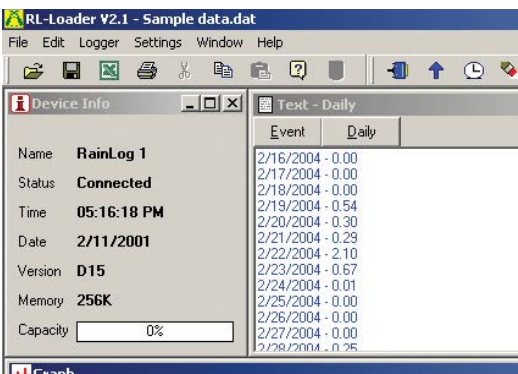
Dimensions 1.5" W x 2.5" H x 1" D



RL-Loader 2 Software



This free software package will run on Windows 98 and newer. RL-Loader is used to configure and download data from the RainLog™. Data is displayed in both text and graphical formats. You can print graphs and reports directly. Previously saved data can be loaded to perform analysis and generate reports. This software can export to Excel and a Windows mobile app is available so you can use your PDA to download data in the field.



- The Device Info window gives you vital information about the attached RainLog™ like Time/Day and the amount of memory used.
- The Text window displays daily totals or the list of rainfall events as they occurred.
- The Graph window displays a bar chart or the daily rainfall totals. The graphing range is also configurable.

RainLogger™ and Industrial RainLogger SP™ for Remote Rainfall Monitoring

The **RainLogger™** is the perfect solution for collecting and recording rainfall in remote locations. It is comprised of our tipping bucket rain gauge and fitted with the RainLog™ data logger mounted and ready for installation in the ground.

Features

- Our RainLog™ data logger with an extra large 2MB memory
- Long-life lithium battery
- One minute time/date stamp resolution
- Windows compatible RL-Loader Software
- A built in bubble level assures accurate installation
- 2 year warranty on electrical components

The **RainLogger™** system features the **Rainew™** UV- inhibited polycarbonate Tipping Bucket with a lifetime warranty. The 8" diameter collector meets NWS specifications for statistical accuracy.

The **RainLogger SP™** is a more rugged RGA industrial tipping bucket for enhanced accuracy. Constructed from anodized aluminum and stainless steel, the RGA tipping bucket Rain gauge provides years of precision recording of rainfall data.

The **RainLogger SP™** includes all of the above features PLUS...

- The tipping bucket sensor is mounted on stainless steel instrument bearings and housed in an anodized aluminum case
- An insect/debris screen is also provided
- 5 year warranty on assembly



RGAI-1 Rain Gauge Analog Interface

Features

- 4 outputs to choose from: 4-20mA, 0-20mA, 0-24mA or 0-5 VDC.
- DIN rail mountable.
- DIP switch configuration.
- 1", 5" or 10" ranges.
- Optically isolated inputs.
- 24V reset input.
- 5 year warranty.

The RGAI-1 provides an analog interface between any tipping bucket rain gauge and a data acquisition device (DAQ). The RGAI-1 Rain Gauge Interface is the only dedicated analog converter available today making it easier to integrate any tipping bucket rain gauge into a DCS, PLC or SCADA system.

Intended for use in industrial applications where a 4-20mA, 0-20mA, 0-24mA or 0-5 VDC is required, output is easily selected via a simple dipswitch setting. The enclosure is constructed of glass-filled polycarbonate ensuring years of internal circuitry protection. The RGAI-1 is engineered to easily snap into a standard 35mm DIN rail or panel mounted using corner mount holes on the enclosure.